

PACKAGING INFORMATION SHEET



A Product of Atticus, LLC

| | |
|---------------------|---------------------|
| Product Name: | SpiruS |
| Product SKU: | 520103 |
| Package Size: | 4 x 1 gal |
| Product Class: | Herbicide |
| Active Ingredient: | S-Metolachlor 83.7% |
| Unit Weight: | 39 Lb. |
| Units Per Pallet: | 36 Cases |
| Full Pallet Weight: | 1,461 Lb. |
| Density U.S.: | 9.18 lb/gal |
| Special Handling: | None |

| | |
|----------------------------|--------|
| Warehouse Stacking: | 3 high |
| In Transit Stacking (FTL): | 1 high |
| In Transit Stacking (LTL): | 1 high |

Stacking heights are guidelines based on engineering designs.
Always observe safety guidelines during stacking

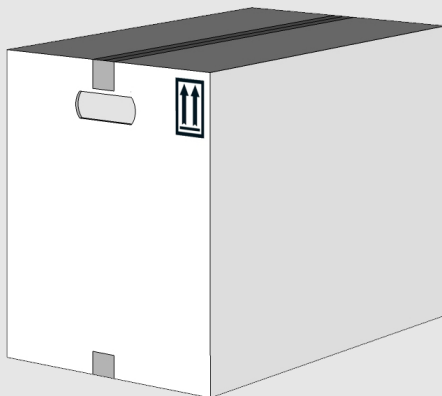
| | |
|----------------------|------------|
| 53' OTR Trailer: | 26 pallets |
| 40' Ocean Container: | 20 pallets |
| 20' Ocean Container: | 10 pallets |

Total number of pallets is based on a maximum OTR gross weight limit of 43,600 lb with 26 floor pallet spaces.

* Unit and full pallet weights represents the net product weight plus all associated packaging weights.

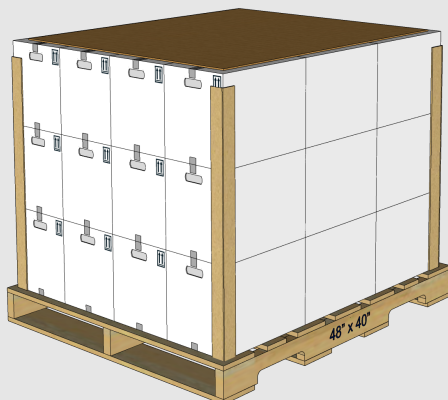
Unit Dimensions (L x W x H)

14.75" x 9.75" x 11.5"



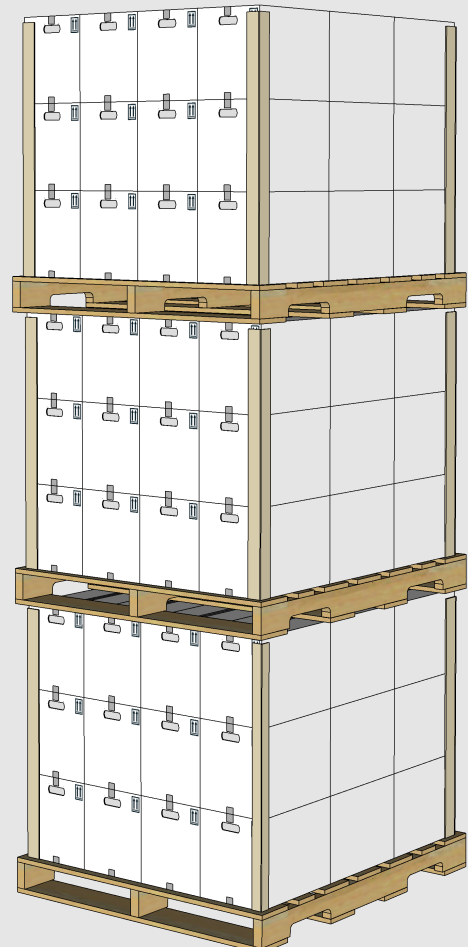
Full Pallet Dimensions (L x W x H)

48" x 40" x 39"



Required Warehouse Space (L x W x H)

48" x 40" x 117"



For more details around the information provided please contact Atticus, LLC

940 NW Cary Parkway Suite 200 \ Cary, NC 27513 \ ph 984.465.4754 \ f 984.465.4755 \ www.AtticusLLC.com

Rev: 11/7/2022

PACKAGING INFORMATION SHEET



A Product of Atticus, LLC

| | |
|---------------------|---------------------|
| Product Name: | SpiruS |
| Product SKU: | 520104 |
| Package Size: | 30 gal |
| Product Class: | Herbicide |
| Active Ingredient: | S-Metolachlor 83.7% |
| Unit Weight: | 309 Lb. |
| Units Per Pallet: | 5 Drums |
| Full Pallet Weight: | 1,592 Lb. |
| Density U.S.: | 9.18 lb/gal |
| Special Handling: | None |

* Unit and full pallet weights represents the net product weight plus all associated packaging weights.

| | |
|----------------------------|--------|
| Warehouse Stacking: | 3 high |
| In Transit Stacking (FTL): | 1 high |
| In Transit Stacking (LTL): | 1 high |

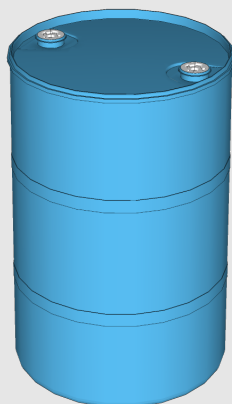
Stacking heights are guidelines based on engineering designs.
Always observe safety guidelines during stacking

| | |
|----------------------|------------|
| 53' OTR Trailer: | 26 pallets |
| 40' Ocean Container: | 20 pallets |
| 20' Ocean Container: | 10 pallets |

Total number of pallets is based on a maximum OTR gross weight limit of 43,600 lb with 26 floor pallet spaces.

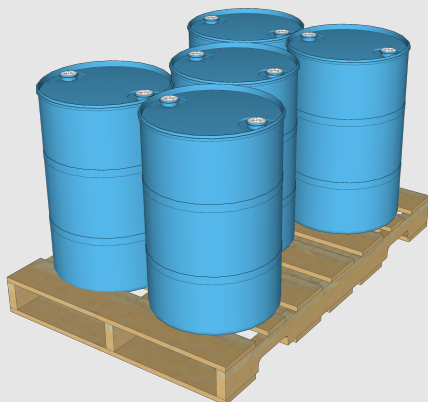
Unit Dimensions (L x W x H)

19.5" x 29.5"



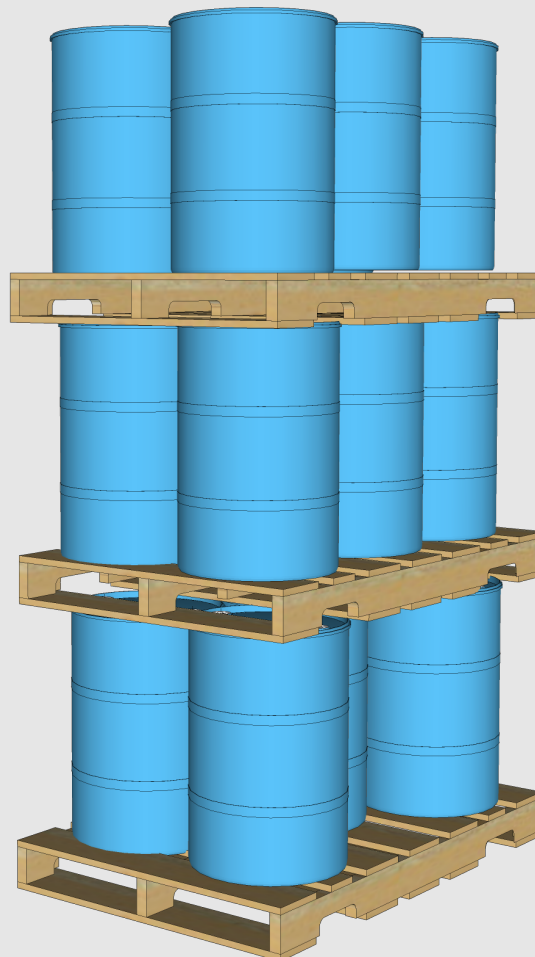
Full Pallet Dimensions (L x W x H)

48" x 40" x 34"



Required Warehouse Space (L x W x H)

48" x 40" x 102"



For more details around the information provided please contact Atticus, LLC

940 NW Cary Parkway Suite 200 \ Cary, NC 27513 \ ph 984.465.4754 \ f 984.465.4755 \ www.AtticusLLC.com

Rev: 11/7/2022