

# PACKAGING INFORMATION SHEET



A Product of Atticus, LLC

Product Name:	<b>Talak 7.9% F</b>
Product SKU:	530306
Package Size:	4 x .75 gal
Product Class:	Insecticide
Active Ingredient:	Bifenthrin 7.9%
Unit Weight:	28 Lb.
Units Per Pallet:	48 Cases
Full Pallet Weight:	1,398 Lb.
Density U.S.:	8.68 lb/gal
Special Handling:	

\* Unit and full pallet weights represents the net product weight plus all associated packaging weights.

Warehouse Stacking:	3 high
In Transit Stacking (FTL):	1 high
In Transit Stacking (LTL):	1 high

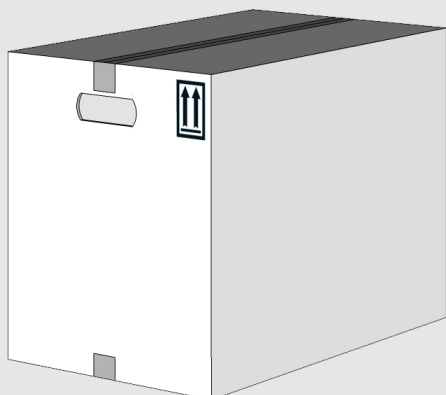
Stacking heights are guidelines based on engineering designs. Always observe safety guidelines during stacking

53' OTR Trailer:	26 pallets
40' Ocean Container:	20 pallets
20' Ocean Container:	10 pallets

Total number of pallets is based on a maximum OTR gross weight limit of 43,600 lb with 26 floor pallet spaces.

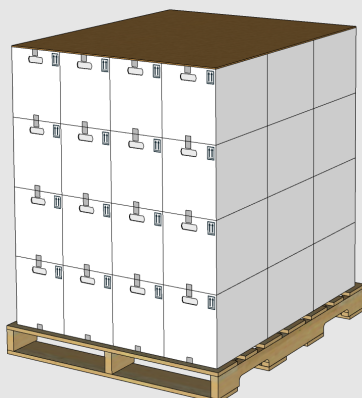
## Unit Dimensions (L x W x H)

14.75" x 8.75" x 11.5"



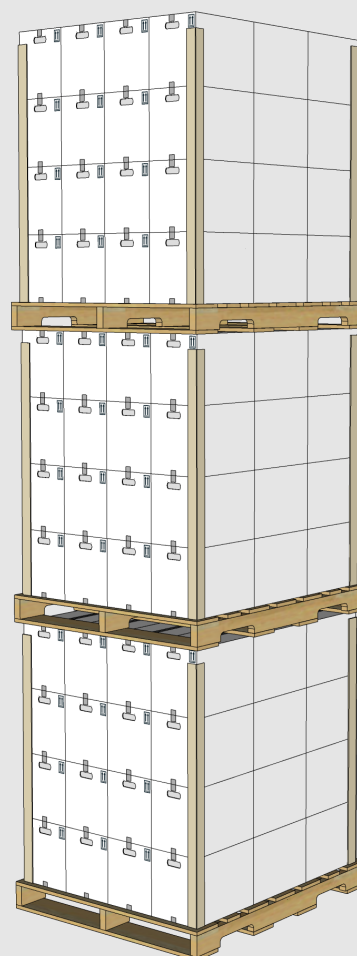
## Full Pallet Dimensions (L x W x H)

48" x 40" x 51"



## Required Warehouse Space (L x W x H)

48" x 40" x 153"



For more details around the information provided please contact Atticus, LLC

940 NW Cary Parkway Suite 200 \ Cary, NC 27513 \ ph 984.465.4754 \ f 984.465.4755 \ [www.AtticusLLC.com](http://www.AtticusLLC.com)

Rev: 5/20/2024

# PACKAGING INFORMATION SHEET



A Product of Atticus, LLC

Product Name:	<b>Talak 7.9% F</b>
Product SKU:	530057
Package Size:	4 x 1 gal
Product Class:	Insecticide
Active Ingredient:	Bifenthrin 7.9%
Unit Weight:	38 lb.
Units Per Pallet:	48 Cases
Full Pallet Weight:	1,851 Lb.
Density U.S.:	8.72 lb/gal
Special Handling:	None

\* Unit and full pallet weights represents the net product weight plus all associated packaging weights.

Warehouse Stacking:	2 high
In Transit Stacking (FTL):	1 high
In Transit Stacking (LTL):	1 high

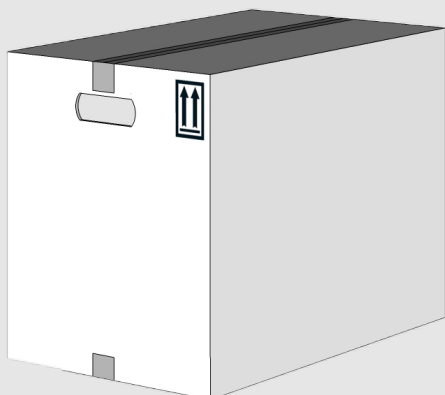
Stacking heights are guidelines based on engineering designs. Always observe safety guidelines during stacking

53' OTR Trailer:	23 pallets
40' Ocean Container:	20 pallets
20' Ocean Container:	10 pallets

Total number of pallets is based on a maximum OTR gross weight limit of 43,600 lb with 26 floor pallet spaces.

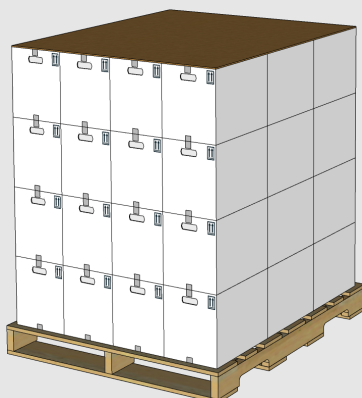
## Unit Dimensions (L x W x H)

15" x 11.25" x 14"



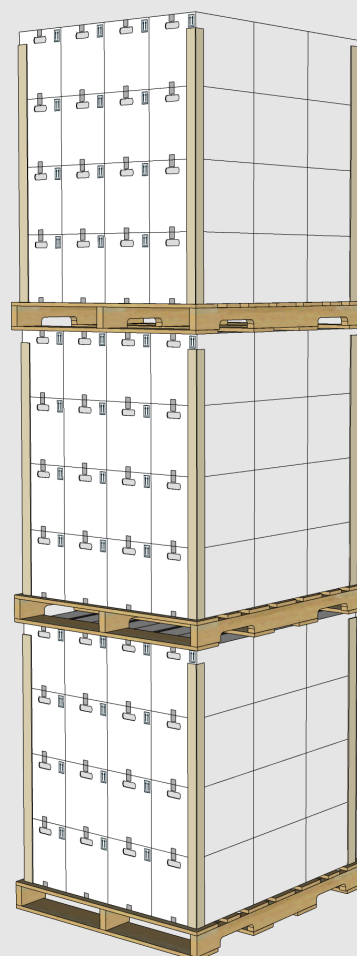
## Full Pallet Dimensions (L x W x H)

45" x 45" x 61"



## Required Warehouse Space (L x W x H)

45" x 45" x 183"



For more details around the information provided please contact Atticus, LLC

940 NW Cary Parkway Suite 200 \ Cary, NC 27513 \ ph 984.465.4754 \ f 984.465.4755 \ [www.AtticusLLC.com](http://www.AtticusLLC.com)

Rev: 6/9/2023

# PACKAGING INFORMATION SHEET



A Product of Atticus, LLC

Product Name:	<b>Talak 7.9% F</b>
Product SKU:	530073
Package Size:	30 gal
Product Class:	Insecticide
Active Ingredient:	Bifenthrin 7.9%
Unit Weight:	294 Lb.
Units Per Pallet:	5 Drums
Full Pallet Weight:	1,517 Lb.
Density U.S.:	8.68 lb/gal
Special Handling:	None

Warehouse Stacking:	3 high
In Transit Stacking (FTL):	1 high
In Transit Stacking (LTL):	1 high

Stacking heights are guidelines based on engineering designs.  
Always observe safety guidelines during stacking

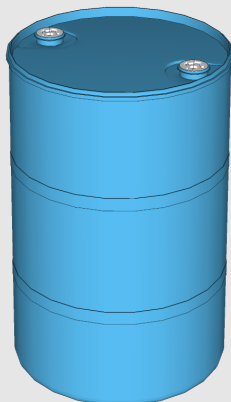
53' OTR Trailer:	26 pallets
40' Ocean Container:	20 pallets
20' Ocean Container:	10 pallets

Total number of pallets is based on a maximum OTR gross weight limit of 43,600 lb with 26 floor pallet spaces.

\* Unit and full pallet weights represents the net product weight plus all associated packaging weights.

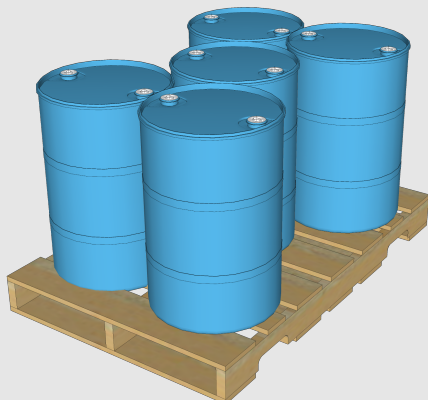
## Unit Dimensions (L x W x H)

19.5" x 29.5"



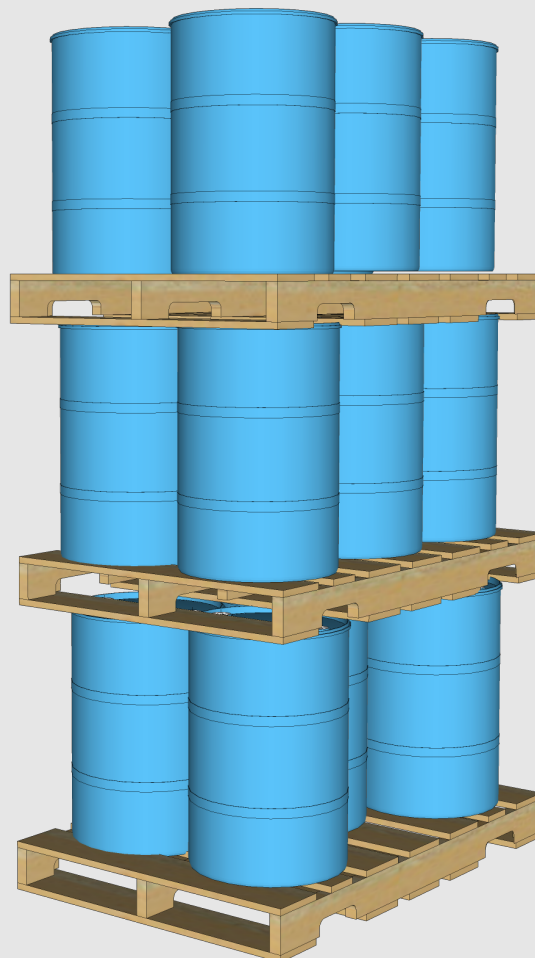
## Full Pallet Dimensions (L x W x H)

48" x 40" x 34"



## Required Warehouse Space (L x W x H)

48" x 40" x 102"



For more details around the information provided please contact Atticus, LLC

940 NW Cary Parkway Suite 200 \ Cary, NC 27513 \ ph 984.465.4754 \ f 984.465.4755 \ [www.AtticusLLC.com](http://www.AtticusLLC.com)

Rev: 3/13/2024

# PACKAGING INFORMATION SHEET



A Product of Atticus, LLC

Product Name:	<b>Talak 7.9% F</b>
Product SKU:	530121
Package Size:	265 gal
Product Class:	Insecticide
Active Ingredient:	Bifenthrin 7.9%
Unit Weight:	2426 Lb.
Units Per Pallet:	1 IBC
Full Pallet Weight:	2,426 Lb.
Density U.S.:	8.68 lb/gal
Special Handling:	None

\* Unit and full pallet weights represents the net product weight plus all associated packaging weights.

Warehouse Stacking:	3 high
In Transit Stacking (FTL):	1 high
In Transit Stacking (LTL):	1 high

Stacking heights are guidelines based on engineering designs.  
Always observe safety guidelines during stacking

53' OTR Trailer:	17 pallets
40' Ocean Container:	17 pallets
20' Ocean Container:	10 pallets

Total number of pallets is based on a maximum OTR gross weight limit of 43,600 lb with 26 floor pallet spaces.

## Unit Dimensions (L x W x H)

48" x 40" x 46"



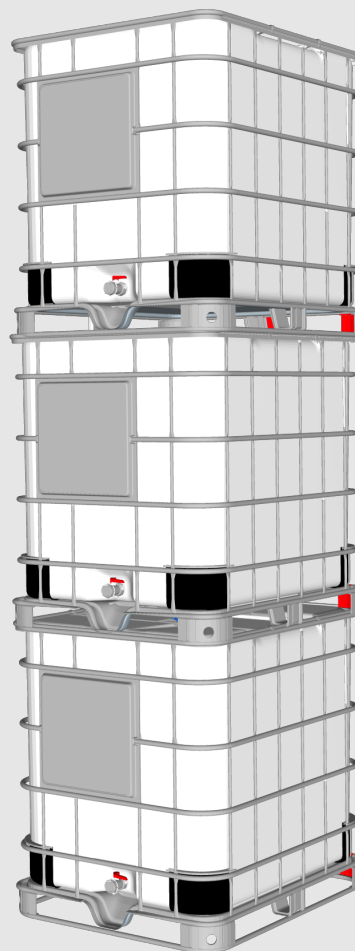
## Full Pallet Dimensions (L x W x H)

48" x 40" x 46"



## Required Warehouse Space (L x W x H)

48" x 40" x 138"



For more details around the information provided please contact Atticus, LLC

940 NW Cary Parkway Suite 200 \ Cary, NC 27513 \ ph 984.465.4754 \ f 984.465.4755 \ [www.AtticusLLC.com](http://www.AtticusLLC.com)

Rev: 3/17/2023